

# SCOUT Projects:

## Cockpit Sunscreen

*m/v SCOUT (Great Harbour N37)*

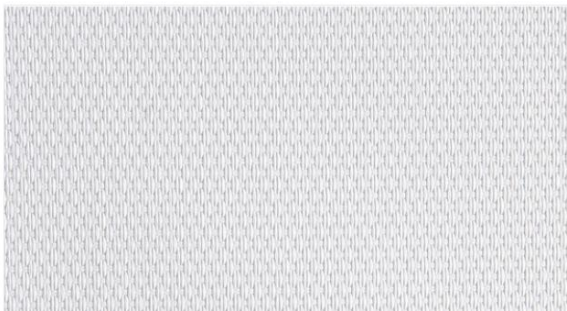
*Ray and Lisa Henry*

### Description

We wanted an “easy-up” partial screen to reduce the sun intensity when the cockpit was facing “that” direction at a marina or at anchor.

### Parts Used

1. White Phifertex 50% filter fabric (Various: Amazon, Sailrite, etc.)



Phifertex® Plus Vinyl Mesh White 54" Fabric

Item # 2358

★★★★★ 4 REVIEWS

140 Available ⓘ

Qty 1-14

\$20.95/YD

Qty 15-59

Save 5%

\$19.90/YD

Qty 60+

Save 10%

\$18.86/YD

1

ADD TO CART

WISHLIST

2. 2 pieces PVC track (<https://www.sailrite.com/Flex-A-Rail-White-90>)



Flex-A-Rail White 90" Long

Item # 103355

258 Available ⓘ

\$12.95/90-IN

1

ADD TO CART

3. 16ft Awning Rope (<https://www.sailrite.com/Keder-Awning-Rope-Tape>)



Keder Awning Rope White 5/16"

Item # 102549

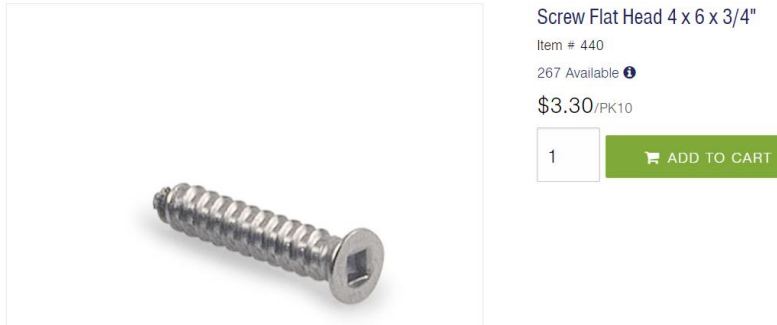
2172 Available - More Coming 7/3/2019 ⓘ

\$1.20/FT

1

ADD TO CART

4. Sailrite #4/#6 Screws (these are special screws with a #4 head and a #6 thread)



5. Sunbrella binding for trim (Various: Amazon, Sailrite, etc.)  
6. Plastic grommets (Various: Amazon, Sailrite, etc.)  
7. Finish-style zipper (one that allows it to completely separate)



8. Zipper stops (for cutting zipper to length)



## Design

We decided we wanted two pieces of shading with a zippered middle for a several reasons – rolled up fabric would be easier to handle/stow, each piece could be alternately used to shade the side windows (with another track), and the zippered split in the middle would allow swim platform access.

We selected 7 feet of length for each half which brought the sides just around the curve at the sides. We decided that we could pin the bottom edge to the rail with bungees or lengths of line through grommets at the bottom edge.

## Assembly

The sewing process went pretty well. Our 40 year old home machine could do up to 4 layers of the Phifertex plus binding that were needed at the corners, but that was it. Sew awning rope to the top with some fabric cover, then fabric binding on the other three edges.



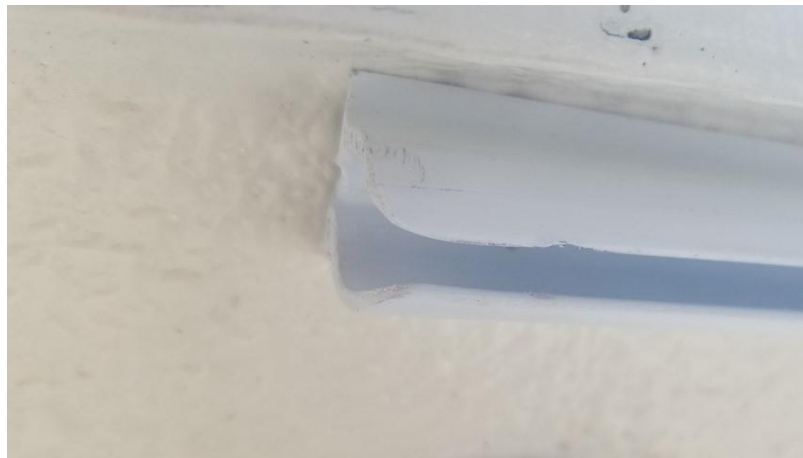
We had to cut the zipper down to 33 inches from the 48" standard size. This only involved the cut and then pinching on a couple of new stoppers. Then sew the zipper to the inner edge to mate the two halves together.

The track went up easily pushed as far up against the lip of the cockpit overhang as possible. Two pieces of track were used that met right in the middle where the zipper would be. I used 4" spacing for the screws right into the Nida-core of the top (note the abrasion on the track at each screw location – see tip #6 below).



### TIPS:

1. Watch every Sailrite video related to what you are working on at the time – their videos are fantastic.
2. You want the #4/#6 screws from Sailrite for the track – the head fits down in an indentation to allow the rope-tape to slide past
3. The PVC track will bend around the cockpit curve without heating if it is warm outside. Start screwing it in on the straight part and then work your way around.
4. You want to go with a close spacing on the screws (I used 4"). The Nida-Core fiberglass skin is not very thick that you will be screwing in to, so you need the most support possible.
5. Sand the corners of the PVC track that you will be inserting the rope into. This will prevent it from catching on the sharp edge.



6. Buy the special #0 square drive bit from Sailrite for the screws. I did not, and marred the track at each screw location with a “too fat” bit shank.

### Completion

We are very happy with the result.

When not in use, the PVC track is completely invisible from the outside of the boat and hides under the lip of the overhead really well.

The Phifertex cuts down on the intensity of the sun really well, but still allows visibility outward.



*From Inside*



*From Outside*





***Zippered Separator***



***Rail Attachments***



***Rope in Track***

## Comments and do-overs

We may add a piece of PVC track on the sides to shade the saloon windows when the sun is on the side.

While completely functional and secure (we had a 40kn thunderstorm come through yesterday with the screen up!), I am not overly happy with the ergonomics of the lines holding the screen to the rail. I may change them out at some point for some wide webbing and turn-button style releases.